

# CASP Newsletter

College Academic Support Programs Conference Biennial Newsletter, jointly sponsored by Texas Association for Developmental Education (TADE) and Texas College and Reading Association (TxCRLA)

Spring 2010

## Special points of interest:

- A successful CASP 2009 conference
- CASP 2010: El Paso
- CASP 2011: Austin
- Feature Articles specific to the field of learning assistance
- State organization updates and events information

## Inside this issue:

- Glady Shaw Award **2**
- Feature: Benefits of Attending a Conference **5**
- New and Improved NADE Guides **7**
- Feature: Plagiarism in College **3**
- TxCRLA Updates **8**
- TADE Updates **10**
- Obituary: Nancy Snouffer **14**

## Welcome!

By Carolyn Mello

President, Texas Association for Developmental Education

The 2009 CASP Conference was a huge success, from beginning to the end. Everyone garnered invaluable information to share with students and colleagues. I was excited to see all the new and familiar faces at the CASP 2009 Conference in San Antonio October 21-23, 2009. Presenters from all over Texas gave informative sessions related to new strategies and best practices in developmental education, which have helped make their own students and programs successful. Presenters provided new ways of meeting the ever-diverse needs of developmental students. Again, the institutes and concurrent sessions related to new strategies and research.

The National Association for Developmental Education (NADE) sponsored the Certification Training Wednesday. We had a full house with eighteen participants and the NADE trainers. All attendees received materials and information to begin the certification process on their campuses.

I appreciate that you took the time from your busy schedules to attend the conference and participate in the TADE and TxCRLA organizations. I hope you will explore the possibilities these programs provide for more information. I am excited because this Spring Newsletter is filled with an abundance of information about the "happenings" in TADE/TxCRLA and upcoming events of interest.

As President of TADE for 2009-2010, I have set several goals that I would like to accomplish during this time. The first is to increase membership by encouraging

everyone to investigate the institutional memberships. I discovered that there are several Texas NADE members who are not currently TADE members. The TADE organization would like to recruit those folks and to extend invitations to new faculty at our institutions. You can be a big help in this endeavor. Next, I will make timely applications for all grants available to our organization. Without doubt, I want our organizations to continue to stay politically informed and active. I feel this is necessary to make important decisions regarding the future of developmental education.

Once again, thank you for joining TADE, and I hope to be in communication with you throughout the coming year.

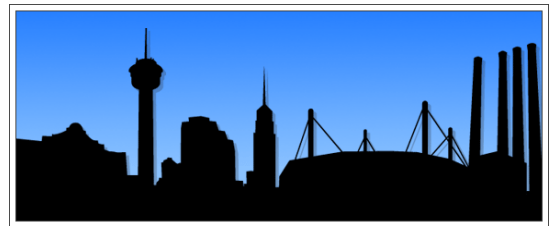
We applaud site chair, Mary Ann Greenlees, along with all the conference committee members for coordinating the 2009 conference.

**As a recap:** the CASP Conference Opening Gala Reception was held in the Coronado Ball Room with live Spanish guitar music provided by the renowned Alice Gomez and Latin Percussions. Dr. Judith G. Loredo, Assistant Commissioner for the Division of P-16 Initiatives, Texas Higher Education Coordinating Board both entertained and challenged the educator audience at Thursday's Luncheon. Friday Morning's awards breakfast with Jerry Woodfill, BAEE, BSEE, Technical Managers' Representative, NASA Johnson Space Center, Former Apollo 11 and 13 Warning System Engineer

amused his audience with humor and reality. Woodfill's program dealt with the rescue of Apollo 13 as the Warning System Engineer. He further entertained his audience with his rendition of President John Kennedy's "Ask Not" Speech. Special thanks to both speakers.

CASP '09 is history, but the benefits live on in the professional lives of its conferees.

**Looking ahead:** CASP 2010 El Paso, Texas October 13-15. El Paso has always been an oasis destination for travelers, explorers, and those of us with a pas-



sion for learning and teaching. We look forward to hosting next year's conference at the El Camino Hotel and provide opportunities for professional development.

El Paso is located in the Chihuahuan Desert of extreme west Texas, along the Rio Grande River, adjoining both New Mexico and the country of Mexico with the Franklin Mountains, the southern tip of the Rockies, slicing El Paso nearly in two. With its classic Western geography and because it shares an international border with Ciudad Juarez, Mexico's rich culture pervades every part of El Paso, from its architecture and art to its celebrations and cuisine. El Paso's area

(Continued on page 2)

## LINDLEY WORKMAN ALYEA RECEIVES FIRST SHAW AWARD

Lindley Workman Alyea, Assistant Director of the Student Learning Assistance Center (SLAC) at Texas State University, is the first recipient of the Gladys R. Shaw Professional Development Award. Ms. Alyea will apply the monetary award to her expenses for the 2010 6th International Conference on Supplemental Instruction in New Orleans, Louisiana. This conference is held every two years.

Ms. Alyea first met Mrs. Gladys Shaw, the award's namesake, at the CASP 2008 Conference in Corpus Christi, Texas. They worked together as the featured speakers for the 11th Tutor Training Leadership Institute. It was here that Ms. Al-

yea discovered that she and Mrs. Shaw shared a "passion for instilling a variety of life skills" and leadership abilities in the learning center staff at the SLAC. Her primary responsibility at Texas State University is the supervision of over forty SI Leaders, working with eight disciplines. "It would be an honor to attend [the SI conference] in Gladys R. Shaw's name," adds Ms. Alyea.



(l-r) Gladys Shaw, Lindley Alyea, and Sharon Haigler

Every student can learn, just not on the same day, or the same way.

-- George Evans

(Welcome, continued from page one)

is 248 square miles, making it the fourth largest city in Texas, and 22nd in size in the United States. As the nation's third fastest growing metropolitan area, El Paso, in the Mountain Time Zone, is midway between Los Angeles and Houston.

Visitors have no problem finding plenty to do in El Paso. They can sample some of the best Tex-Mex cuisine in the state of Texas, see

the unusual Bhutanese-style architecture at the University of Texas at El Paso or tour the three Spanish colonial missions, Ysleta, Socorro, and San Elizario. El Paso, well known for fiestas and bazaars, comes to life with a fiesta almost every week, beginning with the Ysleta Mission Festival in Ysleta in July, the Fiesta de San Elisario, in San Elisario in August and the Fiesta de San Miguel in Socorro in September. El Paso also has the Fiesta de los Flores and the El Paso Downtown Festi-

val, to mention a few. The Chamizal offers free outdoor concerts every Sunday during the summer days.

We look forward to seeing you in **El Paso October 13-15. You will come away from the conference ready to meet the challenges as educators.**

Sincerely,

Carolyn Mello, TADE President



## Many thanks to the CASP 2009 Conference Team:

**Site Host** Mary Ann Greenlees

**Treasurer** Alice Laffere

**Registrar** Sophie Caldera-Castañeda

**Registration** Alicia Rodriguez, Chair, Sophie Caldera-Castañeda, Bob Rogers, Sylvia Ybarra

**Administrative Support** Rose Perez

**Newsletter Editor** Lisa Cradit

**Political Liaison** Mary Leonard

**Hospitality** Kathy Stein, Susan Falcon

**Exhibits** Sandra Chumchal

**Evaluations and Certificates** Sylvia Ybarra, Helen Carr

**Posters** Sara Weertz

**Technical Support Team On-Site** J. Michele Tippit, Elida Connel, Steve Dikcis, Juanita Estep, Cheri Sanchez

**Technical Support Team Off-Site** Terry Loomis, Sylvia Cadena

**Program Co-Chairs** Sara Weertz, Carolyn Mello

**Texas Higher Education Coordinating Board (THECB)/CASP Liaison** Tamara Clunis

**CASP 2010**

# CASP 2010

**EL PASO, TEXAS / OCTOBER 13-15**

**“Our Time to Shine: A Commitment to Student Success”**

The star on the mountain is an El Paso tradition and will be lighted to welcome you to the CASP conference next year. Our strong collaborative educational efforts including the University of Texas at El Paso, El Paso Community College, and all 12 area school districts are a shining example of our dedication to student success. From the El Paso Collaborative for Academic Excellence established in the early 1990's to the El Paso Area College Readiness Consortium established in 2005, El Paso has developed a strong commitment to K-16 partnerships.

Stay in the beautiful Camino Real Hotel which was established in 1912 and is on the National Historic Registry. The Camino Real boasts a 25-foot Tiffany dome ceiling above the bar and is located in the revitalized downtown area. Across the street from the El Paso Museum of Art, the Camino Real is a shining testament to the city's colorful past and vibrant future.

El Paso is located at the western tip of Texas, where Texas, New Mexico and Old Mexico meet. It is the largest international metroplex in the world and seamlessly blends cultures and traditions: from the historic Old West to the colors of Mexico, from the heritage of Native Americans to the beauty of our desert sun.

We look forward to seeing you in El Paso next year for CASP 2010, October 13-15.

Bienvenidos!

## Feature Article

### Benefits of a CASP/CRLA/NADE Conference

by Betty Woodfill

Faculty, College Preparatory  
Department  
San Jacinto College, Central

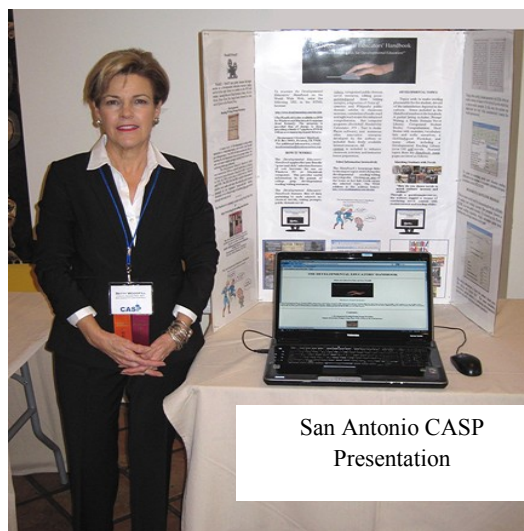
To begin, I'm not fond of airplanes, especially those flying to faraway places with strange names like North Carolina, Massachusetts, and even Virginia. Only those planes outside Toys 'R Us, the ones that I put my grandchildren on, are O.K. This was never a problem for the fourteen or so years I was a full time adjunct developmental language instructor at San Jacinto College in Pasadena, Texas. But when I was hired as faculty, I discovered attending conferences in those distant lands was required. Luckily for me, my first conference as a faculty member was the state and national CRLA and CASP conference in Austin, Texas. How about seated three feet above Texas Highway 290 driving to the conference in my Ford Explorer?

The old adage of "Meet, Greet, and Eat" was what I expected. But I found another word to add which captures what I experienced then and in subsequent conferences: NEAT! What I brought back to my students has to be in that category. In fact, that particular conference gave our department the idea for the STAR AWARD.

One of the sessions dealt with the concept of student achievement recognition. The presenters, Peggy Gene Knight and Sally Griffin Byrd of Lamar College-Port Arthur, outlined programs they used at their college to promote achievement, confidence, and success among their developmental students. This led to my idea called the STAR AWARD – STellar

Achievement Recognition Award. The creation of this award provided a platform for recognizing and honoring our outstanding College Preparatory students. The process involved instructors nominating outstanding students culminated by a department selection of two recipients each receiving a

\$250 College Preparatory Scholarship. Now our department has a presence at the annual spring Student Awards Reception hosted by our college. Were it not for attending this CRLA/CASP in San Antonio, we (continued on page 17)



San Antonio CASP  
Presentation

## Upcoming Events:

### March 28-31, 2010

ATP: Association for the Tutoring Profession  
New Orleans, LA  
<http://www.myatp.org/>

### April 23, 2010

ACTLA: Association of Colleges for Tutoring and Learning Assistance  
Virtual Conference on the internet  
<http://www.actla.info/>

### July 23-30, 2010

TIDE (Technology Institute for Developmental Educators)  
San Marcos, TX  
<http://www.ci.txstate.edu/tide/tidehome.htm>

### September 30-October 1, 2010

NCLCA" National College Learning Center Association Conference  
Hilton Charlotte University Place, Charlotte, NC  
<http://www.nclca.org/annualconference.htm>

### October 13-15, 2010

CASP 2010 El Paso, TX

### October 23-October 25, 2011

CASP 2011 Austin, TX



## Feature Article

### The STAR Award

By Betty Woodfill

Faculty, College Preparatory  
Department  
San Jacinto College, Central

Everyone falls prey to heroic thoughts of stardom. Of course, truly gifted readers and writers might actually win a Pulitzer Prize, publish a book of the year, or a *Reader's Digest* short story. Yet, most never achieve such rewards.

However, what if stardom was within reach? Might dreams be realized? Such was the motivation birthing the College Prep "Stellar Achievement Recognition Award" at San Jacinto College, Pasadena, Texas. While the acronym S-T-A-R did not exactly fit the award's name, using both letters "ST" in the lead word "Stellar" seemed appropriate. Indeed, the word "Stellar" fit with the college's annual "Star" Awards Reception.

Previously, no academic "stars" were recognized from the College Prep rolls. Yet, no doubt San Jac developmental students

longed for the same recognition afforded those enrolled in the higher level academic classes. Initiating the College Prep STAR AWARD was the answer, an achievable goal beyond a fantasy. And not only would College Prep students benefit. Also, department faculty would have a recognizable presence at the annual awards reception. Certainly, on every team's roster, there is a place for a "Most Improved Award" along with the "Most Valuable Player." In a sense, the STAR AWARD is that "most improved" individual. Likewise, that student's professors would be proud of not only their student's achievement but also their contribution to it. Such was the genesis for the award.

The mechanism for selection was predictable: 1) Nomination by the department's professors, 2) A final selection committee and 3) Announcing the two winners at the annual Student Awards Reception. Fine tuning of the process included requesting the nominees submit a resume answering a few questions about their background and hopes for the future.

Additionally, candidates pledged to not only attend the reception but apply the \$250 prize to continuing their education at the college.

With the success of the first year's efforts, the College Prep Department can now count four students among the stars who not only dreamed of academic success but achieved it!



The STAR Award

"Previously, no academic "stars" were recognized from the College Prep rolls. Yet, no doubt San Jac developmental students longed for the same recognition afforded those enrolled in the higher level academic classes."

## CASP Silent Raffle

by Kathy K. Stein

Each year developmental educators and learning assistance professionals gather together to learn from each other and to strengthen our professional relationships. We are privileged to do so every autumn in beautiful and welcoming Texas cities that extend great warmth and hospitality to us. In return, conference attendees have wanted to do something to thank our host cities.

During CASP, we hold a Silent Raffle. Members are invited to donate items and then all of us in attendance get to buy tickets for a chance to win those items. This year,

CASP participants bought a total of \$400 worth of tickets. This money was then donated to the San Antonio Public Library to help promote literacy. Thank you, San Antonio!



Kathy Stein and Alice Rodriguez

At CASP 2010, in El Paso, we will once again hold our Silent Auction. The El Paso Site Committee will select a non-profit organization to be the recipient of your beneficence after the CASP 2010 Silent Raffle comes to a close.

## Feature Story

### Plagiarism in College Writing Classes

By Carolyn Mello

Student cheating has garnered much attention lately, and regardless of policies and monitoring by teachers, students still plagiarize. Some are caught, others are not, and all who plagiarize fail to develop critical thinking skills. Plagiarism is an honesty issue: it is a student trying to convince a professor that some else's words and ideas are his own. Some students at-

tempt the "complete cut and paste" essay, others make purchases from "paper mills," while still others hire someone to do the work for them.

"Copyright violation occurs when you use the actual words (or images) of someone else without their permission. It is a civil offense - something you may owe them compensation (money) for, and something that your college may get upset about because they may share in your liability if you used college equipment to commit copyright

violation. You can be sued" (Plagiarism).

Lamar State College-Orange decided to take a stand against plagiarism. Our campus subscribes to Turnitin.com, the software program for detecting plagiarism. Our students are required to submit their papers themselves. Even though students know that turnitin.com sends a "grade mark sheet" with the Internet and student sources, many students still cut and paste assignments. Below is an example of a report from turnitin.com:

"Some students attempt the "complete cut and paste" essay, others make purchases from "paper mills," while still others hire someone to do the work for them."

#### Turnitin Originality Report

Processed on: 12-11-09 9:56 AM CST

ID: 118126537

Word Count: 747

Submitted: 1

Essay 2 by Mary Doe

Similarity Index

41%

[What's this?](#)

#### Similarity by Source

Internet Sources:

41%

Publications:

0%

Student Papers:

14%

✖ 1

34% match (Internet from 08/14/09)

<http://www.wikihow.com>

✖ 2

4% match (Internet from 04/16/09)

<http://www.wikihow.com>

✖ 3

3% match (Internet from 04/13/09)

<http://dailyknowhow.blogspot.com>

✖ 4

1% match (student papers from 05/27/08)

[Submitted to Lahser High School](#)

Some students think that changing a word or two eliminates the prospect of plagiarism. Not so. While services such as Turnitin make plagiarism more difficult for students, the number of cases of academic dishonesty is still on the rise.

First, what is plagiarism?

In minor cases, the student quotes a sentence or two, without quotation marks or citation. "In the most serious cases, a significant fraction of the entire work was written by someone else: the plagiarist removed

(Continued on page 12)

## New and *Improved* Resources for Developmental Education and Learning Assistance Programs: The *NADE Self-Evaluation Guides, 2<sup>nd</sup> Edition* and NADE Certification

By Linda Thompson and Gladys Shaw

“New and improved” is a common claim that frequently evokes a cynical response—particularly in people who liked the “old and unimproved” version! However, as useful and well-conceived as we believe the older versions were, we truly believe that the second edition of the *NADE Guides* and the recently-revised (2006) process of NADE Certification have managed to incorporate enough new information and features to render them significantly *improved*.

There is no doubt that our institutions, our programs and our students benefit when we spend time thoughtfully reflecting on our practice and looking carefully at how our students fare. Do we know if we make a difference? How can we know unless we have a systematic plan of assessment and self-evaluation in place? As busy learning assistance professionals, however, we may find it daunting to begin a program of self-evaluation and assessment. We need

guidance!

Voila! Step up to the “new and improved” *NADE Self-Evaluation Guides, 2<sup>nd</sup> Edition: Best Practice in Academic Support Programs*, launched in February of 2009! Let this book and its accompanying CD take you by the hand and lead you through clear and detailed steps to self-evaluation of your program. The *Guides* have always been formatted for self-study and evaluation against professional standards of best practices for Tutoring, Developmental Course-work, Factors Influencing the Teaching / Learning Process, and Course-Based Learning Assistance (CLA). That has not changed; the revision maintains that format, but with updated criteria that incorporate recent literature and technology.

Additionally, for this edition, the statements have been grouped into “essential” and “recommended” criteria. This enables you to assess your program in terms of what is considered to be absolutely essential for a quality program, plus other qualities that are

also best practices, but whose absence does not mean you cannot still have a quality program.

Users have told us many times that they reaped serendipitous rewards from going through the *Guides*: Foremost among the benefits they cite are results of the dialogue they generated among themselves, which led them to learn much more about their programs and staff. It also helped to make assessment and planning more enjoyable. It got everyone working as a team on the same page!

The results of your self-evaluation will tell you what you are doing right, as well as what you can do better, in a quantifiable manner. It permits you and your staff to easily prioritize future action plans that take into consideration the unique characteristics of your program, such as your student profile, funding, staff, and available facilities. In fact, self-evaluation using the *Guides* will increase your emphasis on student success, improve services for students, improve academic standards, and document student outcomes.

Laura Villarreal leads the TADE meeting at CASP2009



CASP 2009: Gladys Shaw, Jane McGrath



CASP 2009: Carol Dochen and Laura Villarreal

## Texas College Reading and Learning Association

### New President: Sara Weertz

Sara Weertz received her B.A in English and Professional Writing and her M.Ed. in Instructional Technology with an emphasis in Human Performance Improvement and Training from Wayne State University (Detroit, MI). For years Sara worked as an editor, writing instructional manuals and reference materials for libraries and schools. In 2005 Sara came to Angelo State University (San Angelo, TX) taking the job of Founding Director of Supplemental Instruction and Tutoring. In 2008, her program was a finalist for the Texas Higher Educa-

tion Star Award. Sara has produced a series of tutor training workshops on building rapport, mentoring, and the Socratic method, as well as her most recent workshop on study skills application and resources. Sara is also an active member of the College Reading and Learning Association (CRLA), American Evaluation Association (AEA), International Society for Performance Improvement (ISPI), the Association for the Tutoring Profession, National College Learning Center Association (NCLC), and the American Society for Training and Development (ASTD), as well as Toastmasters' International.

### TxCRLA Election Results 2009-2010

Cheryl Baker Heller, of the University of Texas at El Paso, was elected the new president-elect for TxCRLA. Sara Weertz became president, having served for one year as president-elect. Richard Treviño, Jr. was re-elected treasurer, beginning his second two-year term. Kathy Stein, former TxCRLA president, was appointed by President Weertz to serve as membership chair. Sharon Miller will continue to serve her second year as secretary, and Sharon Haigler moves from the office of president to past president.

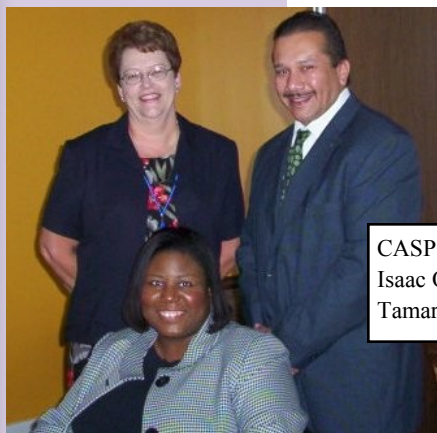
### Call for 2010 TxCRLA Nominations

The TxCRLA Board is actively seeking nominations for Board vacancies for 2010-2011. Opportunities for service will include the office of president-elect and secretary. Officers are traditionally installed at the annual CASP conference, this year in El Paso, Texas, on October 12-15, 2010.

The primary responsibility of the **president-elect** is to serve a one-year term of office before becoming the president of TxCRLA. The president-elect acts as presiding officer in the absence of the president and as chair of the annual CASP conference program committee. The term of office as president is one year. The duties of TxCRLA president include, with board approval, appointing chairs or coordinators of standing and special committees, calling special meetings of the board, and serving as presiding officer at meetings of the TxCRLA membership. At the expiration of the term of office as president, the officer then serves an additional term of one-year as past-president. The past-president acts as chair of the Nominations Committee. All TxCRLA-related travel expenses are incurred by

the organization. A minimum of three (3) years of service is required.

The **secretary's** primary responsibilities are to act as presiding officer in the absence of the president, president-elect, and the past president and to record the proceedings of all meetings of the Board of Directors and the General Meetings. He or she carries out the general secretarial duties of the association. The secretary is expected to travel to and attend all Board meetings and the meeting of the general membership at the CASP conference (typically three meetings per year). All TxCRLA-related travel expenses are incurred by the organization. The term of office required is two (2) years at minimum.



CASP 2009: Betty Black, Isaac Ortega (THECB), and Tamara Clunis (THECB)



THECB liaison Tamara Clunis leads the Town Hall Meeting at CASP 2009 in a packed room.

Please submit your nominations by e-mail **no later than May 1, 2010**, to:  
Sharon Haigler, Immediate Past-President  
[[s-haigler@tamu.edu](mailto:s-haigler@tamu.edu)]

## TxCRLA Board Members 2009-2010

### Sara Weertz

President, TxCRLA  
 Angelo State University  
 ASU Station #10915  
 San Angelo, TX 76909  
 Office phone: 325-942-2710  
 x387  
 Email: sara.weertz@angelo.edu

### Cheryl Baker Heller

President-Elect, TxCRLA  
 University of Texas at El Paso  
 500 W. University  
 El Paso, TX 79968  
 Office Phone: 915-747-7617  
 Email: cherylb@utep.edu

### Richard Treviño, Jr.

Treasurer, TxCRLA  
 University of Texas-Pan American  
 1201 W. University Drive  
 Edinburg, Texas 78539  
 Office phone: 956-381-2585  
 Email: rich\_trev@utpa.edu

### Sharon Miller

Secretary, TxCRLA  
 Lone Star College-CyFair  
 TECH 100-F  
 9191 Barker Cypress Road  
 Cypress, Texas 77433-1383  
 Office phone: 281-290-5251  
 Email:  
 Sharon.T.Miller@LoneStar.edu

### Dr. Kathy Stein

Membership Chair, TxCRLA  
 Sul Ross State University  
 C-132 400 N. Harrison  
 Alpine, Texas 79832  
 Office phone: 432-837-8770  
 Email: kstein@sulross.edu

### Sharon Haigler

Past President, TxCRLA  
 Texas A&M University  
 4230 TAMU – SLC  
 College Station, Texas 77843-4230  
 Office phone: 979-458-0700  
 Email: s-haigler@tamu.edu

## Texas College Reading and Learning Association Membership

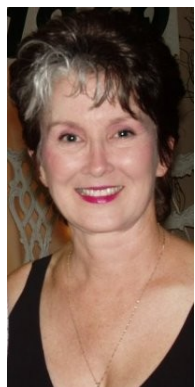
Submitted by Kathy Stein, Membership Coordinator

| Region Name | Number of Institutions       | Number of TxCRLA Members | Number of TxCRLA Members | Number of TxCRLA Members | Number of TxCRLA Members | THECB Region Number |
|-------------|------------------------------|--------------------------|--------------------------|--------------------------|--------------------------|---------------------|
|             |                              | July                     | 2008 January             | 2009 July                | 2009 January             |                     |
| 1           | High Plains                  | 17                       | 6                        | 3                        | 3                        | 4                   |
| 2           | Northwest Test               | 25                       | 1                        | 5                        | 5                        | 8                   |
| 3           | Metroplex                    | 61                       | 19                       | 23                       | 23                       | 9                   |
| 4           | Upper East Texas             | 29                       | 12                       | 10                       | 10                       | 25                  |
| 5           | Southeast Texas              | 9                        | 9                        | 2                        | 2                        | 8                   |
| 6           | Gulf Coast                   | 52                       | 103                      | 28                       | 33                       | 29                  |
| 7           | Central Texas                | 33                       | 33                       | 34                       | 37                       | 33                  |
| 8           | South Texas                  | 55                       | 39                       | 67                       | 76                       | 53                  |
| 9           | West Texas                   | 15                       | 9                        | 8                        | 9                        | 2                   |
| 10          | Upper Rio Grande             | 10                       | 8                        | 13                       | 13                       | 18                  |
|             | No Institutional Association |                          | 2                        | 5                        | 5                        | 11                  |
| TOTAL       |                              | 306                      | 241                      | 198                      | 216                      | 200                 |



## Texas Association for Developmental Education

### New President: Carolyn Mello



Carolyn Mello served as membership chair of TADE from 2005-2008 and is now president. She has been involved in the field of education since three years after graduating high school. From the first grade, Carolyn wanted to be a teacher. She received her Bachelor of Arts degree from Lamar University in Beaumont, Texas and completed her Masters of Education in English and Education from McNeese State University in Lake Charles, Louisiana. As an enrolled agent, Carolyn is enrolled to represent taxpayers before the Internal Revenue Service. She received certification in business composite, psychology, and history, as well as a Wonderlic Test Administrator. While the majority of her teaching assignment is freshman composition one and two, Carolyn also teaches developmental reading and writing. Carolyn created online classes and hybrid classes for developmental reading and writing at LSCO.

Carolyn has been a member of NADE since 2006. A TADE board member since 2005, Carolyn served for three years as the organization's membership chair before becoming president-elect in 2008.

Carolyn is also active on her campus where she serves as chair of the library committee and several other committees. Carolyn's life is rich and diverse, first as a public school teacher and as an adult educator; she has taught convicted felons, and worked as a counselor at a halfway house. In addition to her teaching duties, she conducts Study Skills Seminars to improve critical thinking, allowing students to maximize their potential for success in college. Currently, she teaches composition and developmental reading and writing at Lamar State College-Orange. Carolyn has worked with the Southeast Texas Hospice Dinner Theater and HEB's Feast of Sharing since 1992 and received the Ben and Julie Rogers Community Service Award for 2009. *The Orange Leader* named Carolyn Mello as "Best of the Best" College Teacher in Orange County for 2005, 2006, 2007, and 2009.

**Carolyn Mello, *President***  
Lamar State College-Orange  
410 Front  
Orange, Texas 77630  
Phone: 409-882-3324  
Email: [Carolyn.Mello@LSCO.edu](mailto:Carolyn.Mello@LSCO.edu)

**Dr. Leslie Jones, *President-elect***  
University of Texas at Brownsville  
80 Fort Brown  
Brownsville, TX 78520  
Phone: 956-882-7683  
Email: [Leslie.Jones@utb.edu](mailto:Leslie.Jones@utb.edu)

**Denise Lujan, *Membership Chair***  
University of Texas at El Paso  
500 W. University  
El Paso, TX 79968  
Office Phone: 915-747-6521  
Email: [cldlujan@utep.edu](mailto:cldlujan@utep.edu)

**Frank Cronin, *Secretary***

**Glenda Solomon, *Treasurer***  
Collin College -  
Spring Creek Campus  
2800 E. Spring Creek Parkway  
Plano, TX 75074  
Office phone: 972-881-5659  
Email: [gsolomon@ccc.edu](mailto:gsolomon@ccc.edu)

**Dr. Laura Villarreal, *Past-President***  
University of Texas at Brownsville  
80 Fort Brown  
Brownsville, TX 78520  
Office phone: 956-882-6626  
Fax: 956-882-6637  
Email: [Laura.villarreal@utb.edu](mailto:Laura.villarreal@utb.edu)



### TADE Membership Report

As of February, 2010 TADE has 202 members. Since CASP 09 TADE has added 10 new members, thanks and welcome to all the new members.

If your organization has changed the way they receive e-mails, changed servers, or if your e-mail address has changed in any way please let me know so that I may update your e-mail address.

TADE membership offers many benefits: the CASP newsletter, updated information on TSI changes, the support of a political liaison officer who is constantly monitoring legislative efforts concerning TSI, membership in an organization of instructors and administrators, just like you who face your common problems, a sponsored annual conference on developmental issues, and a strong state organization to support our national parent organization NADE, which maintains and formulates

initiatives and policy concerning developmental education problems. TADE membership will keep you on our mailing lists for "Call for Proposals," "Call to Conference," the CASP newsletter and for updated information on political changes.

Denise Lujan Membership Chair  
[cldlujan@utep.edu](mailto:cldlujan@utep.edu)

## Call for 2010 TADE Board Nominations

President-elect: President-elect will serve as program chair of the annual state conference, assume the chair of the executive committee in the absence of the President, and carry out all duties assigned by the president. The President-elect shall prepare an annual report for presentation at the annual conference. The term of President-elect includes one year as president and a final year as Past-President for a three year commitment as a Board member. The President-elect is expected to attend the NADE leadership training at the annual NADE conference. A fee waiver is provided and expenses will be paid for.

Treasurer: The Treasurer shall monitor the approved budget, provide a report on income and expenditures at each Board meeting, maintain all financial records, issue all checks and purchase orders, prepare regular financial statements for the newsletter and for the yearly state conference and conduct all necessary financial activities of the organization. This is a two-year commitment.

All Elected officers must be residents of Texas and members of both TADE and NADE

Deadline for nominations is May 15, 2010

Questions and nominations should be sent to Laura Villarreal at [laura.villarreal@utb.edu](mailto:laura.villarreal@utb.edu)

(Plagiarism—Continued from page 6)

the true author(s) names(s) and substituted the plagiarist's name, perhaps did some re-formatting of the text, then submitted the work for credit in a class" (Standler, n.d.).

Most college libraries have links to plagiarism information including citations and usually quick links to the style guides for MLA and APA. Unfortunately, the Internet and the World Wide Web make academic dishonesty considerably faster and easier to find other people's words on a topic and pass them off as the student's own with a simple copy-and-paste maneuver. Students often do not believe their instructors will even attempt to verify their work using the Internet.

Academic integrity requires that students be honest and do their own work; however, between 40 and 70 percent of all college students have reported cheating sometime during their academic career (Aiken, n.d.). While electronic plagiarism detection can help address the problem, it still falls short of preventing the problem because it falls short of teaching students "the skills of information analysis, synthesis, writing, and editing." Computer access has made it much easier to plagiarize and to catch plagiarism at the same time.

Moreover, Townley and Presnall (2004) point out that although the technology of catching plagiarism currently has the upper hand, the technology of cheating will eventually evolve to beat it—which will lead to more sophisticated detection systems, leading in turn to better cheating systems, and so on ad infinitum. The solution, they argue, must address why students plagiarize, and it must contain strategies to address both why and how to avoid plagiarism; others agree that a more proactive approach is required (Robinson-Zanartu et al. 2005; Devlin 2006).

### LSCO's Academic Integrity Policy includes:

"The college does not tolerate cheating or plagiarism. Cheating involves either giving assistance to another stu-

dent or receiving assistance from another student during a quiz, test, examination or other individual assignment unless the instructor has explicitly permitted such assistance.

"Plagiarism means, "to take and use as one's own the writings or ideas of another" (American Heritage Dictionary). Before submitting any paper for any course at the college, the student must acknowledge each source used consciously, whether published or unpublished. Students must acknowledge even ideas presented in the student's own words when consciously taken from a source must be acknowledged. In addition, quotation marks (or indenting) must set off phrases or longer passages copied verbatim. Each instructor will explain any special means required to avoid plagiarism in his or her own field.

"The assignment of grades is the responsibility of the instructor. Thus, if the instructor determines that a student's work has been intellectually dishonest, the instructor may award the student an "F" for the course or for the specific task determined to have been dishonestly accomplished. Such action will be preceded by a meeting with the student to provide an occasion for refutation, explanation or mitigation. In cases where the faculty member and student cannot reach agreement, and after consultation with the division director, the student may make a written appeal to the Dean of Instruction within five school days of the meeting with the faculty member. If not resolved, the student may make a written appeal to the Vice President for Academic Affairs within five days.

"The faculty member's charge must include an academic penalty, the most severe being removal from the course with a grade of "F." Additionally, LSC-O may propose an institutional sanction in repeated or blatant cases of academic dishonesty. A student involved in an appeal of an intellectual dishonesty case has the right to remain in class until a decision is made.

(Plagiarism, continued from page 12)

“In cases of a possible institutional sanction, a judgment will be rendered by the Vice President for Student Services. A student who is found guilty of intellectual dishonesty loses his or her right to withdraw voluntarily from the course in which cheating occurred (Academic).” This, policy, however does not stop the piracy. I’ve had students this semester submit cut and paste assignments from other students shown in the example below:

| Author   | Title                | report view detail | web | Publication | Student papers | grademark     | file           | Paper ID  | date     |
|----------|----------------------|--------------------|-----|-------------|----------------|---------------|----------------|-----------|----------|
| Jane Doe | A Dash of Creativity | 92%<br>92%         | 0%  | 0%          | 92%            | Not available | Download paper | 111281663 | 10-25-09 |

What are some of the student excuses for committing plagiarism?

- I didn’t have time to write the paper myself
- The notes I took somehow accidentally got into my paper
- I didn’t realize I had to cite sources in all my classes
- I did not pay attention to that part of the syllabus about plagiarism
- The instructor should have told us what would happen if we plagiarized
- I have a bibliography, isn’t that enough?
- I didn’t know it was plagiarism
- I didn’t remember where I found the information
- My friend let me use her paper to help me with the assignment
- Lack of knowledge
- Someone else’s words will be better than my own
- I didn’t know it was cheating
- I didn’t know....

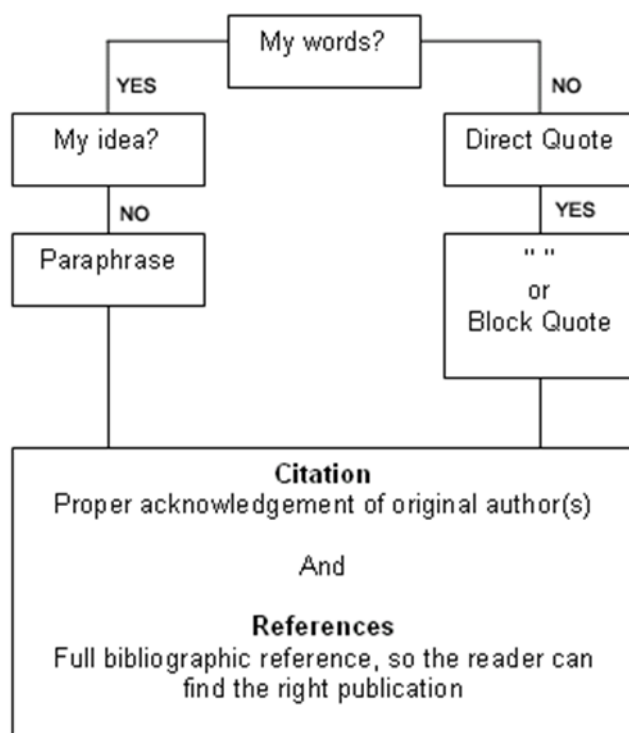
To avoid plagiarism, instructors should

- Define plagiarism and use explicit examples
- Educate students about the honor code and ramifications if violated
- Create assignments that make plagiarism difficult
- Make sure students are familiar with online resources
- Have students submit evidence of the research process along with the paper
- Avoid repeat assignments and paper topics
- Visit “paper mill” sites with student to evaluate the work quality
- Inform students of plagiarism detection software

Recommendations:

- Students should begin the writing process by stating THEIR ideas; then go back to the author’s original work
- Use quotation marks and credit the source when copying exact words. Paraphrase, use own words, instead of copying directly when possible.
- Even when paraphrasing another author’s work, give credit to that author
- If the form of citation and reference are not correct, then attribution to the original author is likely to be incomplete. Therefore, improper use of style can result in plagiarism. Get a style manual to use (What).

The figure below may help to guide student decisions:



(How).

In short, plagiarism is piracy and one of the few ways to stop it is to have students write their assignments in class in blue books, reminiscent of what we did in ancient days.

(For Works Cited, see page 16)

## Obituary: Nancy Snouffer

### Outstanding CASP Supporter

With great sadness, we wanted to inform the CASP membership of the passing of Nancy Snouffer on November 24, 2009.

Ms. Snouffer held Master's degrees in both English and reading. She taught 25 years at Del Mar College, specializing in the teaching of reading and study skills. In 1993 she received the NISOD teaching excellence award. With the help of a colleague, Nancy was site co-chair for the 1995 CASP Conference in Corpus Christi, TX. Several years later, she served two terms as President of the Texas Association for Developmental Education (TADE). In the fall of 2002, Ms. Snouffer was honored by CASP with a Lifetime Achievement Award for her service.

In the fall of 2003, Nancy served as a member of the advisory board for the national College Reading Association Conference sponsored by Texas A&M-Corpus Christi. She began serving on the Corpus Christi Literacy Council in 1986. She served as chair from 2000-2002 and continued as a member of the Executive Committee for several additional years.

Nancy Snouffer co-authored a textbook College Reading Power and published numerous articles in professional journals. She also gave scholarly presentations all over the country.

Nancy Snouffer served on countless committees at Del Mar College during her tenure at the college. Teaching was her love, and student' comments reflected the outstanding teacher she was.

Ms. Nancy Snouffer will be greatly missed by family, friends, and colleagues.



You don't  
understand  
anything until you  
learn it more than  
one way.

-- Marvin Minsky

## Renew Your TADE Membership Today!

TADE Membership offers many benefits: the CASP newsletter, updated information on TSI changes, the support of a political liaison officer who is constantly monitoring legislative efforts concerning TSI, membership in an organization of instructors and administrators, just like you who face your common problems, a sponsored annual conference on developmental issues, and a strong state organization to support our national parent organization NADE, which maintains and formulates initiatives and policy concerning developmental education problems. TADE membership will keep you on our mailing lists for "Call for Proposals," "Call to Conference," the CASP newsletter and for updated information on political changes.

Join today by filling out the membership blank below. The \$10 TADE membership is a great value!

Membership application and \$10 should be sent to

Glenda Solomon, Professor Developmental Mathematics  
Collin College  
Plano, TX  
972-880-5659



## Texas Association for Developmental Education

Institutional/Program Membership Form  
From Carolyn Mello, TADE President

Institution \_\_\_\_\_

Address \_\_\_\_\_

New membership       Renewal

Institutional       Program

For each institutional/program membership, up to eleven individuals will receive the same membership benefits as individual members. The cost of an institutional/program membership is \$100 – this includes one free membership. Please list the individuals who will be covered by this institutional/program membership:

| Name      | Email Address |
|-----------|---------------|
| 1. _____  | _____         |
| 2. _____  | _____         |
| 3. _____  | _____         |
| 4. _____  | _____         |
| 5. _____  | _____         |
| 6. _____  | _____         |
| 7. _____  | _____         |
| 8. _____  | _____         |
| 9. _____  | _____         |
| 10. _____ | _____         |
| 11. _____ | _____         |

Please mail this completed form along with payment to:

Glenda Solomon, Professor Developmental Mathematics  
Collin College  
Plano, TX  
972-880-5659  
[gsolomon@collin.edu](mailto:gsolomon@collin.edu)



# TIDE

12th Annual  
Technology Institute for Developmental Educators  
July 25-30, 2010

TIDE provides 5 days of mentoring and hands-on practice to hone your technology expertise. Bring technology projects to begin during the week and receive a year's support to complete these projects. Whether a novice or advanced technology user, you can develop new technology skills and finish technology projects as you network with developmental educators like yourself. Enjoy a technology vacation as during the day you learn and during the evening you tube the river, explore San Antonio Riverwalk, and experience Texas hospitality with the largest outlet mall and oldest dance hall.

TIDE is designed for and by developmental educators for your technology needs.

Learn from Dave Caverly, Lucy MacDonald, Rick Sheets, Scott McDaniel, and Doug Holschuh

Focus on your technology projects with hands-on instruction, practice, and extended support

Workshops include: Teaching with blogs or wikis; Teaching with *Second Life*; Teaching through Mobile Phones; Integrating Technology into Developmental Math; Google *Docs* and *Facebook*; Creating Audio or Video Podcasts; Video Conferencing; Developing Webpages; Best Practices for Online Tutoring, for Online Learning Centers, for Online courses, and for Hybrid Courses; Advanced *Word* or *PowerPoint*; Teaching through Video Conferencing; Assistive Technology; plus much more.

Contact: Dave Caverly (512.245.3100)  
dcaverly@txstate.edu

Visit for more info and online registration:  
<http://www.ci.txstate.edu/TIDE/TIDEhome.htm>

(Plagiarism, continued from page 13)

### Works Cited

Academic Integrity Policy. (n.d.). In *Lamar State College-Orange Handbook*.

Aiken, L. R. (n.d.). "Detecting, Understanding, and Controlling for Cheating on Tests". *Research in Higher Education*, 32(6), 725-736.

How to Recognize Plagiarism (n.d). Indiana University Bloomington Retrieved December 10, 2009, <https://www.indiana.edu/~istd/> Web.

Robinson-Zanartu, C., Pena, E. D., Cook-Morales, A. M., Afshani, R., & Nguyen, L. (n.d.). Academic Crime and Punishment: Faculty Members' Perceptions of and Responses to Plagiarism. *School Psychology Quarterly*, 20(3), 318-337.

Standler, R. (n.d.) Plagiarism. Retrieved December 10, 2009, from <http://www.rbs2.com/plag.htm#anchor111111> Web. 10 Dec 2009.

Teaching Students about Plagiarism: An Internet Solution to an Internet Problem Retrieved December 10, 2009 [http://innovateonline.info/pdf/vol2\\_issue5/Teaching\\_Students\\_about\\_Plagiarism-\\_An\\_Internet\\_Solution\\_to\\_an\\_Internet\\_Problem.pdf](http://innovateonline.info/pdf/vol2_issue5/Teaching_Students_about_Plagiarism-_An_Internet_Solution_to_an_Internet_Problem.pdf)

Townley, C., & Parsell, M. (n.d.). Technology and Academic Virtue: Student Plagiarism through the Looking Glass. *Ethics and Information Technology*, 6, 271-277.

What is Plagiarism. (n.d.). *What is Plagiarism*. Retrieved December 10, 2010, from [http://campuslife.suite101.com/article.cfm/what\\_is\\_plagiarism](http://campuslife.suite101.com/article.cfm/what_is_plagiarism)

(Benefits, continued from page 4)

and our students would have missed out on another NEAT idea that has become an annual event.

In 2007 I took my first air trip *abroad*. (We Texans often view such as *abroad*, leaving the Republic of Texas.) So off to Nashville NADE Conference I went! In route, I recited the 23rd Psalm continuously while taxiing down the runway, at lift-off, and through every cloud buffeting until I felt the wheels touch down in “Opryland.” Again the operative word was NEAT as I listened to Dr. Calvin Mackie’s testimony at the Nashville convention! I’ve enjoyed church revivals, inspiring presidential messages, and my husband’s renderings of John F. Kennedy’s space race talk, but never anything more compelling and uplifting than Dr. Mackie’s dramatic recounting of his journey from learning dysfunction to educational excellence. In visiting briefly with Dr. Mackie I learned that portions of his talks were on YouTube.

Returning to Texas, I found video “snippets” of Dr. Mackie on his website. Simply watching a few minutes inspired me to recommend our department order the talk on DVD to play to our classes. On the first playing to my class, I watched students of all nationalities, races, and reading/writing

skill levels respond just as I had, wanting to do their best for themselves, their families, and their country. I’ve used it every semester since returning from that first conference, and the response has always been the same.

And then, came another NEAT conference event. Still not comfortable about “white-knuckle” flights *abroad*, I was granted a reprieve by my merciful department chair. Instead of journeying to North Carolina, my Explorer’s destination would be Corpus Christi for the 2008 CASP Conference. With my husband, on leave from his day-job at NASA, as my pilot/driver, I was excited about what I’d bring back to my stu-

dents. While he toured Columbus’s ships and the Lexington, a World War II aircraft carrier, I enjoyed an altogether enthralling workshop by Essie Childers of Blinn College.

The title of Essie’s program was “A Novel Plan: Motivation and Comprehension in Just Six Weeks!” It was based on the novel *Ethan Frome* and was well worth the extra time needed for attendance at a pre-conference workshop. The content was so charged with useful resources that I will have valuable supplemental reading activities for years to come. In fact, I even got my husband to read both the book and Essie Childers’s handouts. He told me he enjoyed both as much as Columbus’s ships

and the Carrier Lexington. My students returned from Spring Break, and enjoyed six weeks of “Wacky Wednesdays” reading and dissecting the *Ethan Frome* novel.

I was so excited about what I’ve gained for my professional development, my college, and my students that I submitted, with my husband as co-presenter, a proposal for the 2009 CASP conference in San Antonio. It was accepted and, perhaps, someone who attended the conference will say, “It was a wonderful meet, greet and eat event.” And maybe, that same someone will say my presentation was “NEAT!”

#### **CASP Newsletter Editor**

Attn: Lisa Cradit

Texas Lutheran University  
Address: 1000 W. Court St.  
Seguin, TX 78155

Phone: 830-372-6305  
email: lcradit@tlu.edu

#### **WEB Sites**

TxCRLA: [www.txcrla.org](http://www.txcrla.org)  
TADE: [www.tade.org](http://www.tade.org)  
CRLA: [www.CRLA.net](http://www.CRLA.net)  
NADE: [www.NADE.net](http://www.NADE.net)  
Texas Higher Education Coordinating Board:  
[www.THECB.State.Tx.US](http://www.THECB.State.Tx.US)